

HDL KNX Assistant Software

Directory

Directory	1
1 HDL KNX Assistant Software install requirements.....	2
2 Communication mode setting	3
3 Download picture to M/DLP04.1.....	4
3.1 Add a new device	4
3.2 Edit device	5
3.3 Download picture	7
3.4 Package picture.....	7
4 Learn and download IR.....	8
4.1 IR learn	8
4.2 Package IR code	10
4.3 Download IR code.....	11

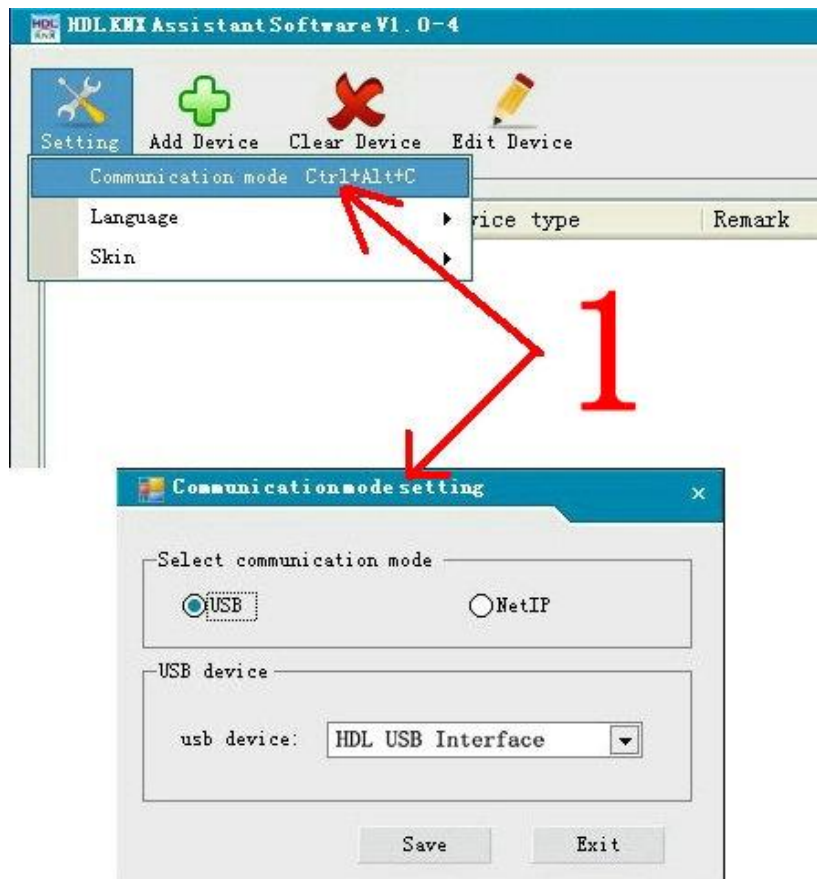
1. Installation tips

- 1.1 Pre-install Microsoft .Net Framework version 2.0 or above
- 1.2 Pre-install the ETS software and the KNX USB driver.

2. Communication mode setting

Download the picture to device have two ways : USB and NetIP. We must set the communication mode before download the picture to device.

Main Form->setting-> Communication mode



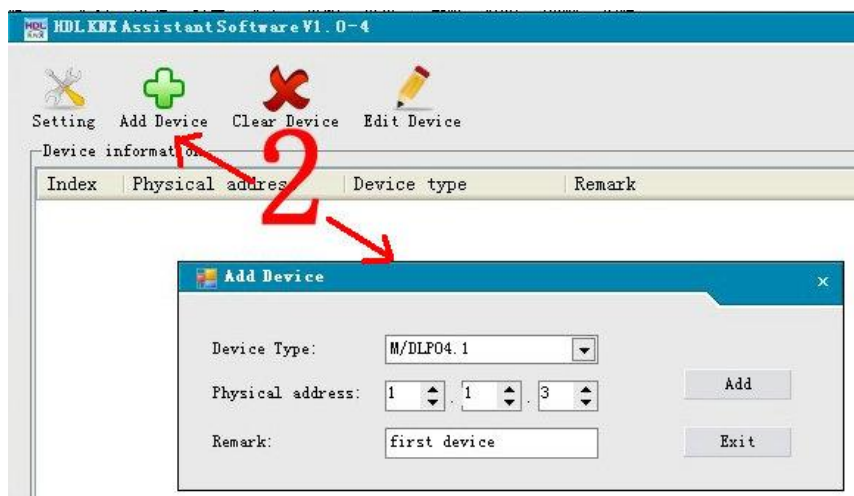
3. Download picture to M/DLP04.1



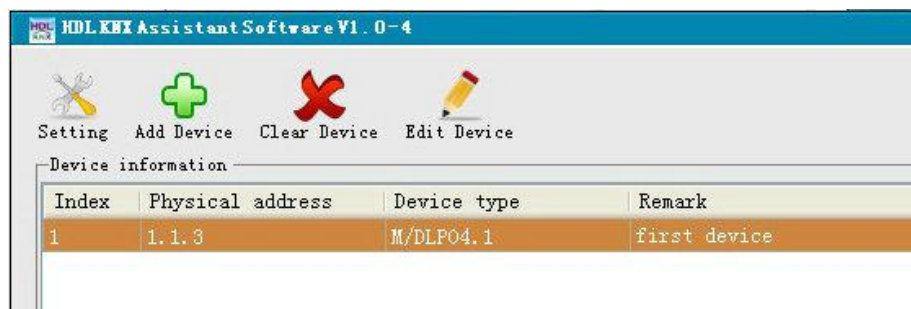
M/DLP04.1

3.1 Add a new device

Main Form->Add Device->set the Physical address and Remark->Add, Exit after add successful.

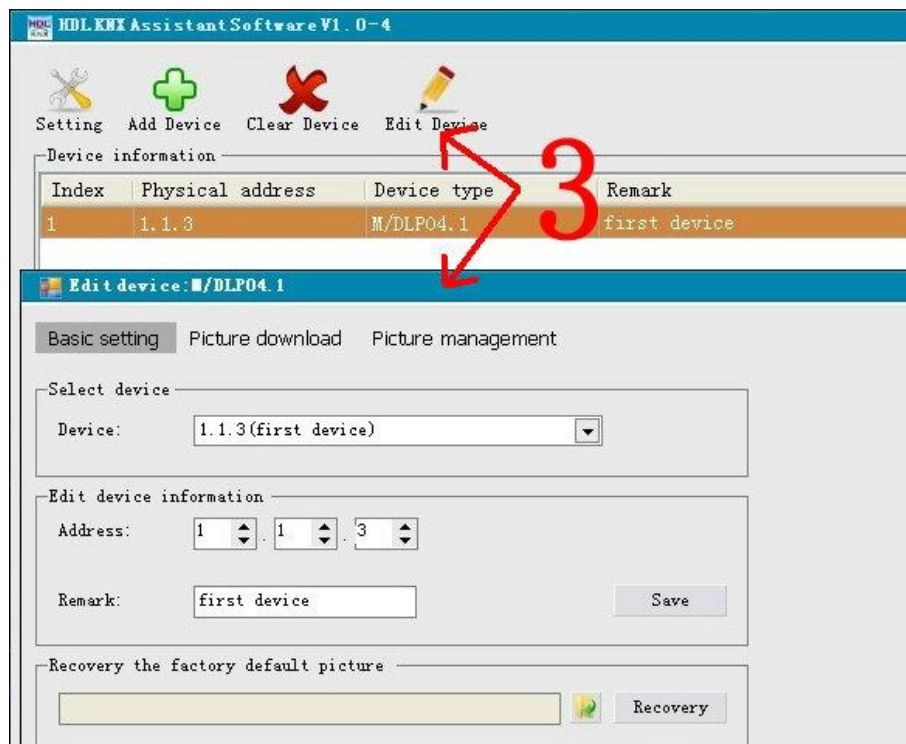


Result After Add successful:

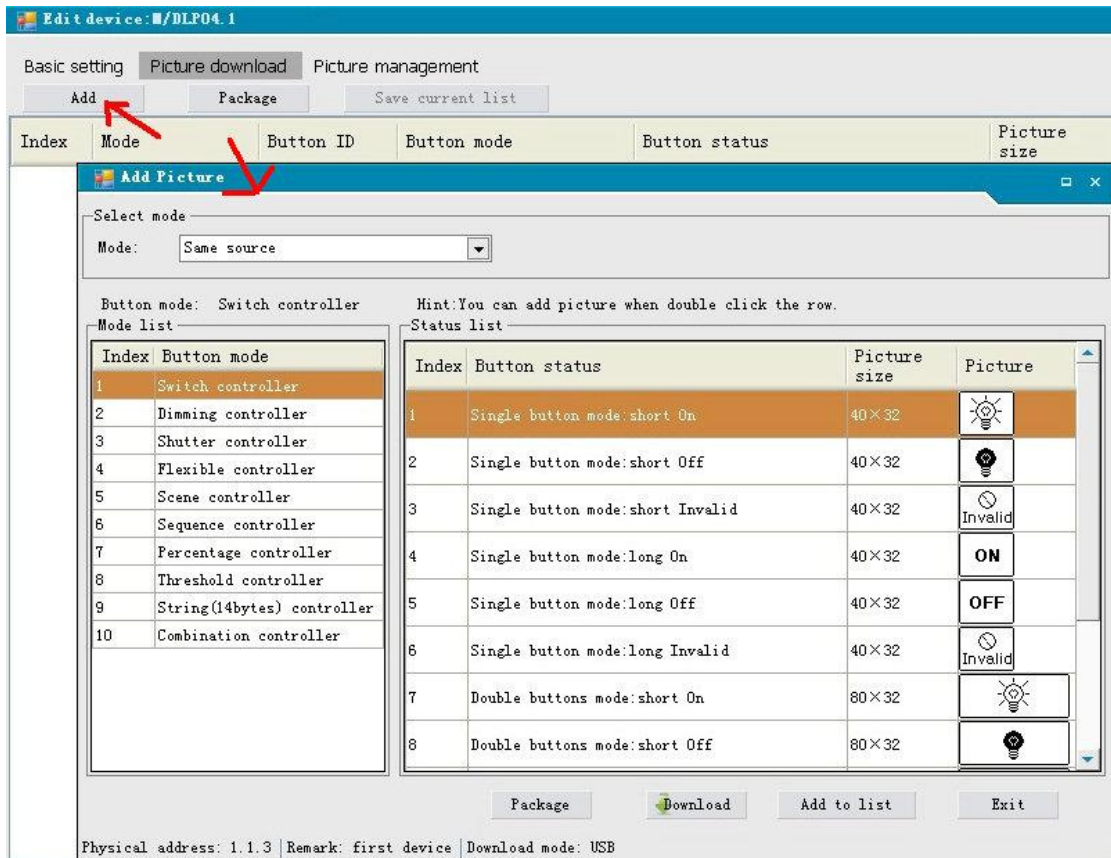


3.2 Edit device

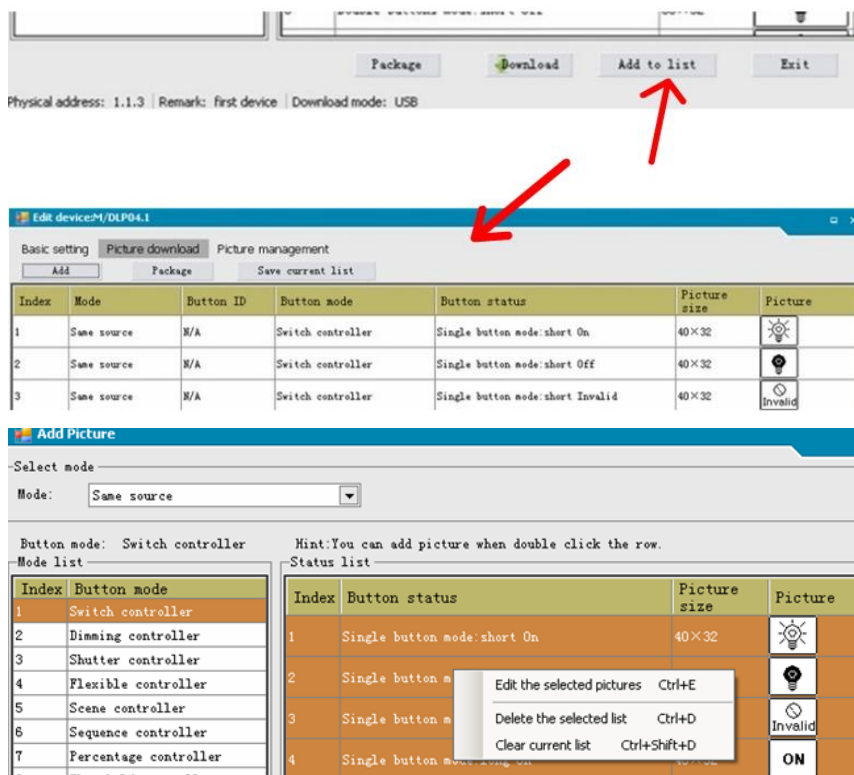
Choose the device, and click the **Edit Device** or double click to open the form of edit.



Picture download->Add, enter the form of Add Picture



Add the picture to the button which need to edit (double click the row which you need edit and choose the picture). Click **Add to list** can add the picture in current page to the form of edit. (Right-click menu can choose to edit or delete item which selected).



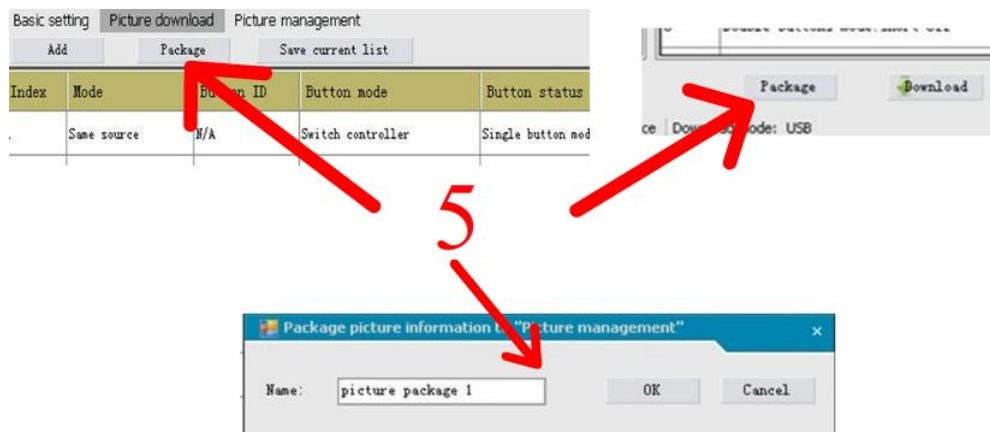
3.3 Download picture

Click [Download picture](#) or [Download](#) to download picture to device

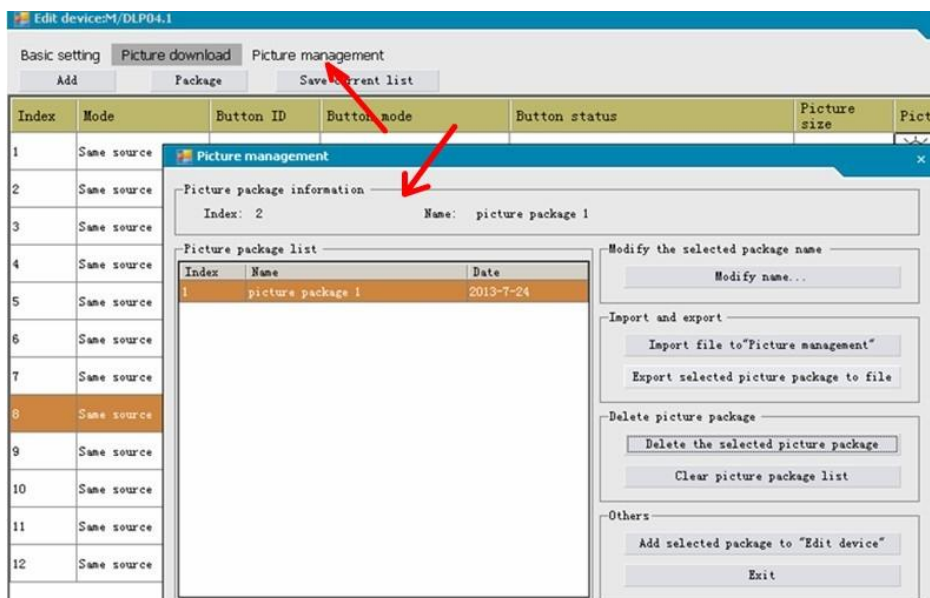


3.4 Package picture

Click [Package](#) and input the name of package, then click [OK](#) to complete package.



After package successful, can see the list of package in [Picture management](#)



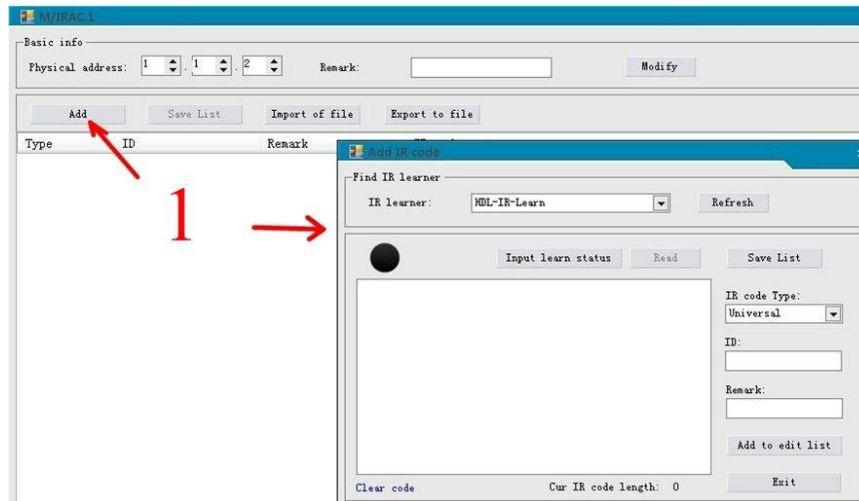
4. Learn and download IR

4.1 IR Learn



IR Learner

Add a IR device and enter the IR device edit form ,click **Add** to enter the form of **Add IR code**.



Click [Input learn status](#) ,the indicator light of IR Learning Device will turn blue. When the remote-control device send a order to IR Learning Device, the indicator light will turn off. Then we can read this IR code.

The sequence of steps is as follows:

- Click **Input learn status**.
- The indicator light turns blue.
- Click **Read**.
- The interface displays the learned IR code in hexadecimal:

00	9F	0F	09	02	75	6F	70	70	08	02	00	00	00
00	00	03	00	01	01	02	02	02	01	02	02	01	01
02	01	02	02	01	01	02	01	01	02	02	02	02	01
01	01	02	02	02	02	02	02	01	02	02	02	02	02
02	02	02	02	01	02	02	01	02	02	01	02	02	02
02	02	02	02	01	02	02	02	02	02	02	02	02	02
02	02	02	02	02	02	02	02	01	02	01	02	01	02
02	02	02	02	02	02	02	02	02	02	01	01	02	01
01	02	02	02	02	02	02	02	02	02	02	02	01	02
01	01	02	A3	01	D6	00	33	00	9D	00	33	00	35
00	31	00	EA	48	32	00	3F	01	59	00	1C	01	56
00	60	00	56	00	71	BD	3F						

Additional interface elements include: **Clear code**, **Cur IR code length: 170**, **IR code Type: Universal**, **ID:**, **Remark:**, **Add to edit list**, and **Exit**.

Input the ID and Remark ,then click **Add to edit list** add the code to IR device edit form.

Input learn status Read Save List

00 9F 0F 09 02 75 6F 70 70 08 02 00 00 00
 00 00 03 00 01 01 02 02 02 01 02 02 01 01
 02 01 02 02 01 01 02 01 01 02 02 02 02 01
 01 01 02 02 02 02 02 02 01 02 02 02 02 02
 02 02 02 02 01 02 02 01 02 02 01 02 02 02
 02 02 02 02 01 02 02 02 02 02 02 02 02 02
 02 02 02 02 02 02 02 01 02 01 02 01 02 02
 02 02 02 02 02 02 02 02 02 01 01 02 01
 01 02 02 02 02 02 02 02 02 02 02 02 01 02
 01 01 02 A3 01 D6 00 33 00 9D 00 33 00 35
 00 31 00 EA 48 32 00 3F 01 59 00 1C 01 56
 00 60 00 56 00 71 BD 3F

IR code Type:
 Universal

ID:
 51

Remark:

Add to edit list Exit

Clear code Cur IR code length: 170

M/IRAC.1

Basic info

Physical address: 1 . 1 . 2 Remark: Modify

Add Save List Import of file Export to file

Type	ID	Remark	IR code
Universal	Universal IR Code 51		00 9F 0F 09 02 75 6F 70 70 08 02 00 00 00 00 03 00 0

4.2 Package IR code

Click **Export of file** can package the IR code list as INI file.

M/IRAC.1

Basic info

Physical address: 1 . 1 . 3 Remark: Modify

Add Save List Import of file Export to file

Type	ID	Remark	IR code
Universal	Universal IR Code 51		00 9F 0F 09 02 75 6F 70 70 08 02 00 00 00 00 03 00 0

Open

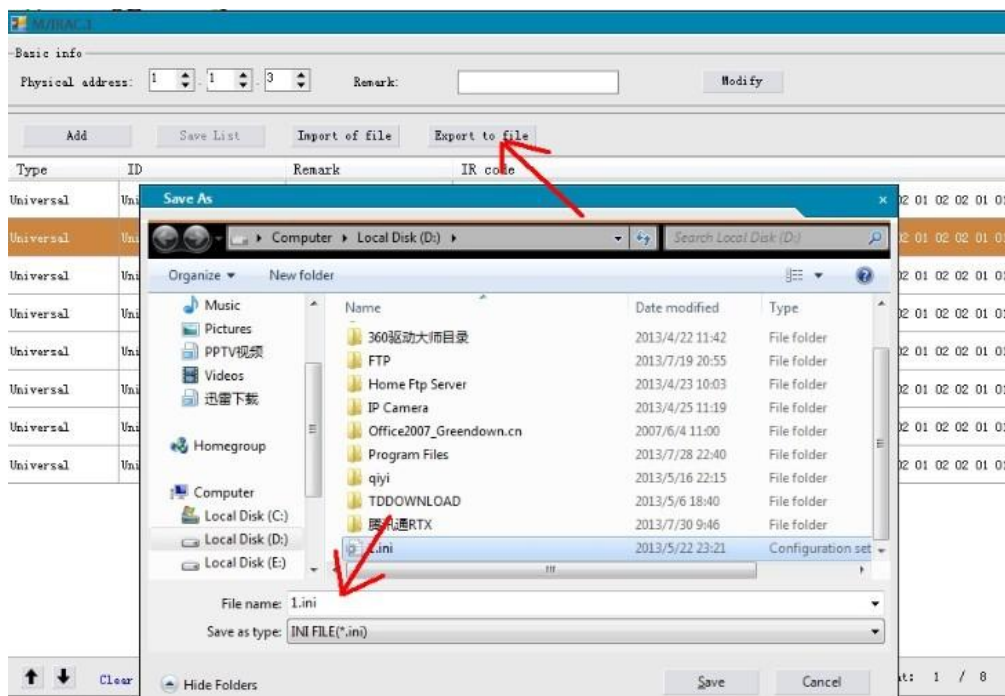
Desktop

1.ini Configuration settings 48 bytes

File name: 1.ini INI FILE (*.ini)

Open Cancel

Click **Import to file** can import IR code into list.



4.3 Download IR code



M/IRAC.1

